

Flat 6, 14 Park Row, Leeds, LS1 5HU

£1,100 Per Calendar Month

SW
RESIDENTIAL

- Large Open Plan Living Room and Kitchen
- Central LS1 Location
- 5th Floor
- Available Now
- Council Tax Band E
- Two Double Bedrooms
- Sought After Location
- Approx 800 sq ft
- EPC Rating D

THE PROPERTY

Spacious two bedroom apartment situated on the second floor of this centrally located development.

This property is located on Park Row in the heart of the City Centre in the former Commercial Union Insurance Building converted into 35 apartments in 2000.

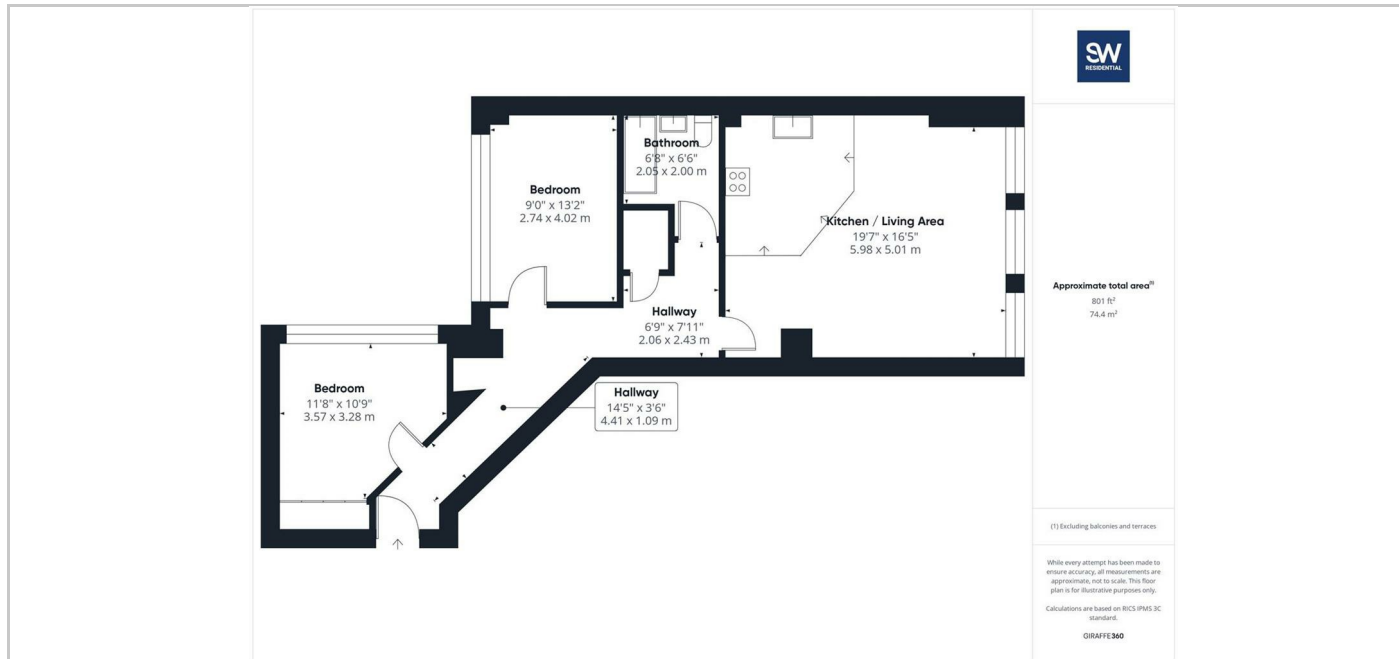
The apartment itself is spacious and has excellent views over Park Row from the living room and the bedrooms being located at the rear of the property means they benefit from being much quieter.

The accommodation comprises a large open plan living room and kitchen along with two double bedrooms and bathroom.

Available to rent furnished.

Available NOW.

SITUATION



Directions